

MODULAR FLAT GATE VALVE TYPE SMFS - GM

SHUT-OFF COMPONENT FOR SILO AND CONTAINER SYSTEMS WITH OPTIMAL SEALING – MOTOR DRIVEN



The SMFS type flat gate is attached to silo and vessel discharges and assures the optimal sealing of stored dusty and granular bulk goods up to 8 mm in size. The motor driven flat gate can also be used as a proportional slide gate. This modular gate allows the installation of various drive configurations - manual, pneumatic, or electric motor driven - on the same base frame.

Areas of Application

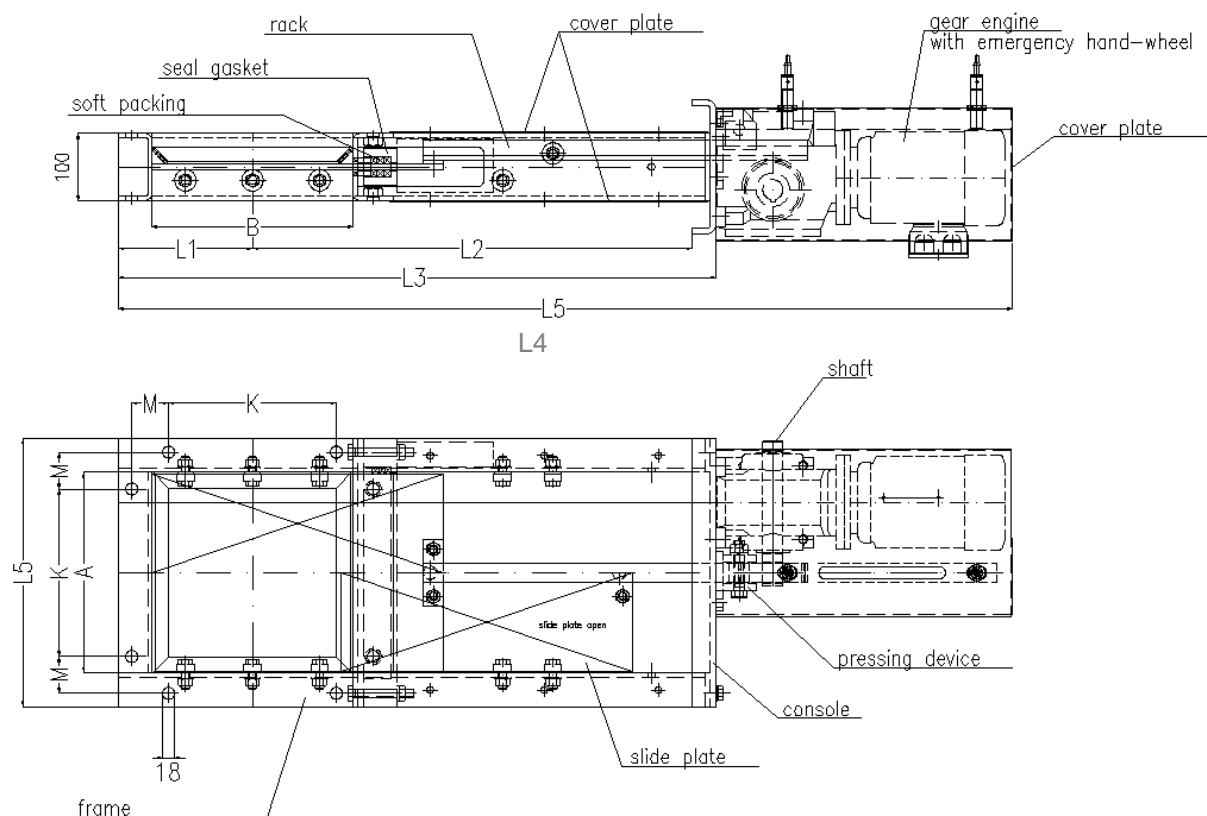
- Grain size up to 8 mm
- High quality gate plate sealing; packing box easily adjustable and exchangeable
- Steel guide on the slide gates upper side
- Large, easily removable protective covers
- Special sizes and designs upon request

Details / Explanation

- Frame steel or stainless steel
- Slide plate made of stainless steel 1.4301, grinded
- Finish hammer tone silver-grey
- Other finishings upon request

Finish

Dimensional & spare parts drawing



Dimensions Flat Gate Type SMFS - GM

NW	200 x 200	300 x 300	400 x 400	500 x 500
A	200	300	400	500
B	200	300	400	500
L1	150	200	250	300
L2	500	650	850	950
L3	690	890	1090	1290
L4	1135	1335	1635	1935
L5	300	400	500	600
K	150	250	300	350
M	55	55	80	105

Technical Data Flat Gate Type SMFS – GM

NW	200 x 200	300 x 300	400 x 400	500 x 500
Gewicht	ca. 62 kg	ca. 70 kg	ca. 80 kg	ca. 105 kg
Motor	0,75 kW; 230/400 V (3,4/2,0 A)			
Limit switch	Proximity switch IMF IG5593			
Rack and pinion drive	Module 3			

Article numbers

NW	200 x 200	300 x 300	400 x 400	500 x 500
Article number	71210280	71210270	71210274	71210277

Rights reserved to make technical alterations