

JET-LOADER RONDO – HAND DRIVEN

The Jet-loader type JBM 250 Rondo is used to load open road and railway vehicles as well as silo vehicles and containers with free flowing, dry, dusty to pebbly bulk materials.

Areas of Application

- Compact design with round, wear resistant plastic buckets
- Top cone with rubber coating
- External rubber bellows, hand winch with deflection pulley
- Filling level indicator
- External towing ropes ensure easy replacement of the rubber bellows and internal buckets.
- Ingress protection IP 54

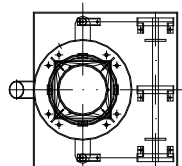
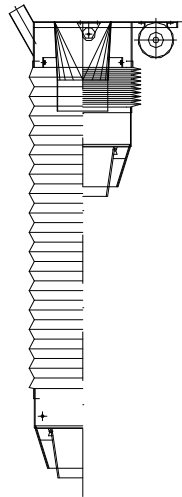
- Material grade: Steel or Stainless Steel, top coat with hammer tone silver gray
 (more colors available on request)

Details / Explanation

Finish

Article Number

Type JBM 250 Rondo –hand driven–	Article number
For silo dome opening of 380 mm to 500 mm diameter, for loading of dry, dusty bulk materials, with 5 round inner buckets made of plastic, open at the bottom, without impact disk, with rubber bellows, 1 vent pipe DN 100/108, with winch, deflection pulley and approx. 15 m cable. Construction height: approx. 930 mm plus filling level indicator (ca. 200 mm) Telescope shaft length: approx. 1450 mm External steel parts rust removal degree SA1, zinc-phosphate-grounding, approx. 40 µm, top coat hammer tone gray, ca. 40 µm.	751 10 138



Scale Drawing
JBM 250
hand driven