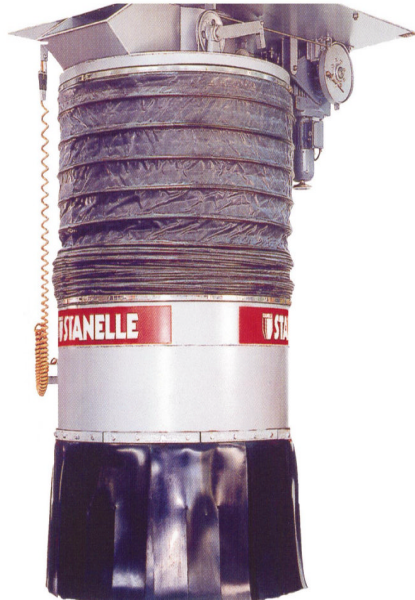


## GRAVEL LOADER RONDO

### DN 600, 800



The loader type **RONDO DN 600, 800** are special loaders used to load open trucks and railway vehicles as well as silo vehicles and containers with stone dust, chips and gravel

#### Areas of Application

- Design with extended lift can be used for ship or waste dump loading.
- With the extraction connector a required exhaust volume of approx. 2000-3000 m<sup>3</sup>/h/lfm can be sucked off with a compatible dedusting device.
- The **Rondo Type DN 600, 800** has a loading capacity of 500-800 m<sup>3</sup> / h for stone dust and sand.
- The gravel and hard stone industry is the ideal application area for the **Rondo Type DN 600, 800**, with its highly abrasion resistant components.
- The rotatable and easily exchangeable protective tubes made of Hardox 400 increase the life time significantly. Wall thickness up to **20 mm** and the use of special steel lower the operating and maintenance costs.

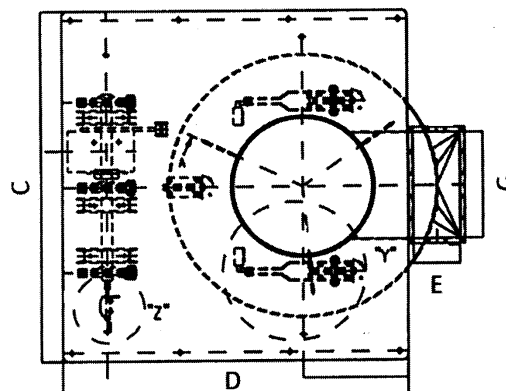
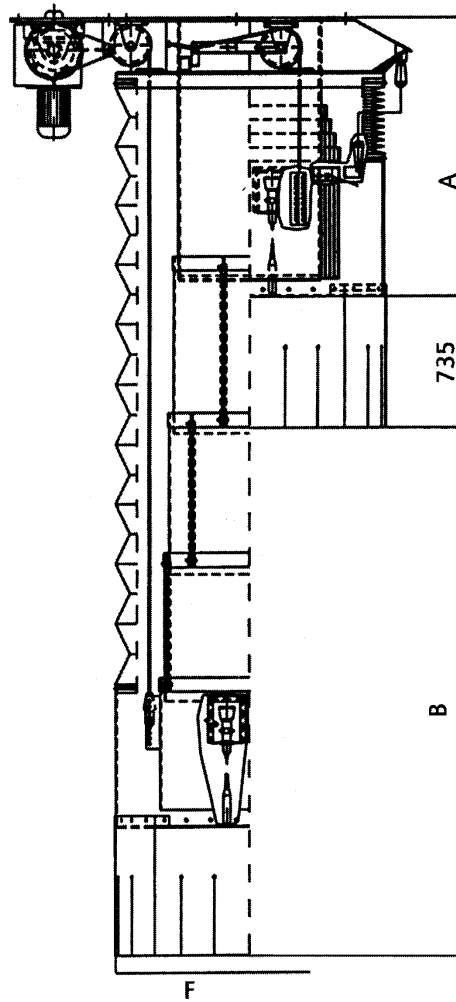
#### Details / Explanation

- External parts are sand blasted, grounded and have a hammer tone silver gray color or they are coated with premium paint.

#### Finish

**Dimensions**

Rondo DN	600	800
A Construction Height	1600	
B Lift	3000	
C	1800	2000
D	1735	1935
E	300	
F	1350	1500
G	600	



**Technical Data Rondo DN 600, 800**

Type Rondo DN	600	800
Nominal diameter	DN 600 – 800 mm	
Loading capacity	500 – 800 m <sup>3</sup> / h	
Construction height	1600 mm	
Telescope shaft length	3000 mm	
Suction capacity	10.000 m <sup>3</sup> / h	12.000 m <sup>3</sup> / h
Voltage	400, 500, or 690 V	
Winch motor	1,5 kW	

**Article Number**

Type Rondo DN 600	Article number
<p>Compact design, abrasion resistant telescope pipes made of Hardox 400, loader head attached to solid chains, open bottom, without deflector plate. Loader head with opening DN 600 and abrasion resistant pipes with 6 mm wall thickness, air outlet 300 x 600 mm, 30° incline. Built in winch, 3 pulley wheels, end switch, slack rope switch as well as lift limit switch.</p> <p>Rubber bellows and double-layer dedusting skirt made of reinforced rubber, diameter Ø 1350 mm, <b>with individual replaceable segments.</b></p> <p>2 capacity sensors for filling level indication, height adjustable:</p> <p>Nominal diameter: 600 mm            Lift motor: 1,5 kW - 400 V, 50 Hz            Construction height: approx. 1600 mm plus dedusting skirt 600 mm            Telescope shaft length: approx. 3000 mm</p> <p>External steel parts rust removal SA 1, zinc-phosphate-grounding, approx. 40 µm, top coat hammer tone gray, approx. 40 µm.</p>	751 10 296

**Extras**

Reinforced pipe – for initial equipment –	Article number
<p>For extra splintery and abrasive bulk materials            Pipe wall thickness <b>20 mm instead of 10 mm.</b></p> <p>for Rondo DN 600, width approx. 600 mm, length 1500 mm</p>	751 10 249
- as spare part -	751 10 298

**Article Number**

Type Rondo DN 800	Article number
Compact design, abrasion resistant telescope tubes made of Hardox 400, loader head attached to solid chains, open bottom, without deflector plate. Loader head with opening DN 800 and abrasion resistant pipes with 10 mm wall thickness, air outlet 300 x 800 mm, 30° incline. Built in winch, 3 pulley wheels, end switch, slack rope switch as well as lift limit switch. Rubber bellows and double-layer dedusting skirt made of reinforced rubber, diameter Ø 1500 mm, <b>with individual replaceable segments.</b> 2 capacity sensors for filling level indication, height adjustable: Nominal diameter: 800 mm Lift motor: 1,5 kW - 400 V, 50 Hz Construction height: approx. 1600 mm plus dedusting skirt 600 mm Telescope shaft length: approx. 3000 mm  External steel parts rust removal SA 1, zinc-phosphate-grounding, approx. 40 µm, top coated hammer tone gray, approx. 40 µm.	751 10 125
Various telescope shaft lengths and designs available	On request

**Extras**

Reinforced pipe – for initial equipment –	Article number
For extra splintery and abrasive bulk materials Pipe wall thickness <b>20 mm instead of 10 mm.</b>	751 10 293
for Rondo DN 800, width approx. 760 mm, length 1500 mm	
- as spare part -	751 10 297