

DOCKING STATION NW 200



The **docking station type NW 200** is used for loading small component bins with dry, free flowing bulk solids.

- Installation friendly, compact loader head with air exhaust socket (diameter Ø 100/108 mm), 2 pneumatic cylinders (diameter: Ø 100 mm), solenoid valve 230 V/AC, terminal box.
- Conical **inlet- and outlet-buckets** made of steel 37-2 (4 mm wall thickness).
- The **rubber bellows** consists of highly abrasion proof neoprene Hypalon coated with polyester canvas and clip steel rings.

- After rust removal SA 2,5, a primer and top coat with hammer tone gray.

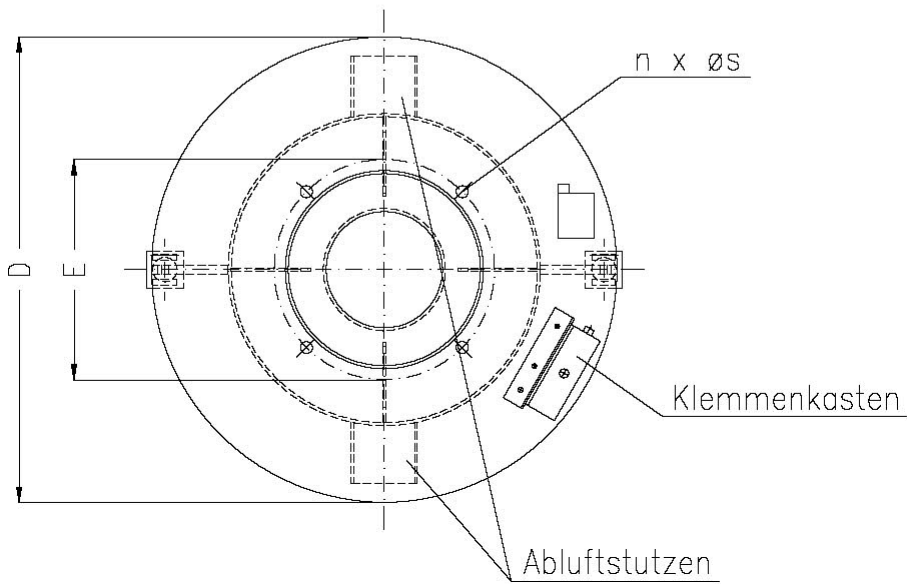
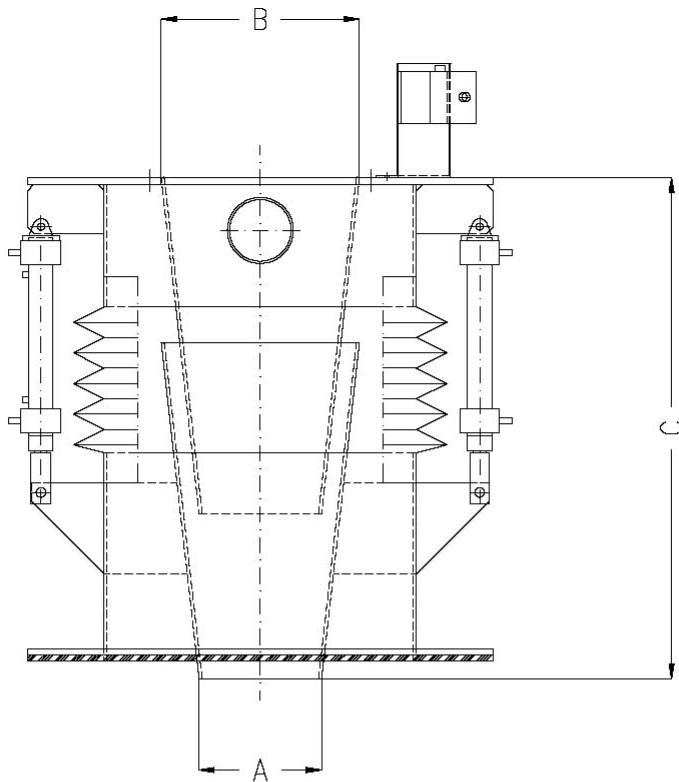
Areas of Application

Details / Explanation

Finish

NW 200

Scale Drawing
Overview



Technical Data NW 200

| Type NW 200 | | 200 |
|----------------------|---|---------------------------------------|
| Loading capacity | | 100 m ³ / h |
| Nominal diameter | A | 200 mm |
| Inlet cross section | B | Ø 300 mm |
| Construction height | C | 1395 mm |
| Lift length | | 440 mm |
| Weight | | approx. 120 kg |
| Operating pressure | | 6 bar |
| Flange diameter | D | Ø 760 mm |
| Hole circle diameter | E | 4 x M16 / hole circle diameter 360 mm |

Article Number

| Type NW 200 | Article number |
|-------------|----------------|
| | 751 10 302 |

Other nominal diameters and design on request!