

Mobile BIG-BAG – filling station VARIO BB-S



Mobile:

The filling station can be easily moved with a forklift on-site.

Multiple use of RONDO/QUADRO:

The existing STANELLE jet loaders RONDO/QUADRO normally for open and closed truck loading can also be used for BIG-BAG loading. An adaptation to existing loading systems is also available as an option.

Flexible:

Perfect height adjustment due to two trapezoidal screws enable:

- the filling of BIG-BAG's with filling heights up 1.550 mm / optional 2.000 mm
- the adaptation to different filling hose lengths depending on the BIG-BAG manufacturer

BIG-BAG's up to 1400 x 1360 mm ground size fit into our VARIO BB-S.

Environmentally friendly:

The filling-dome has an aspiration outlet to connect to a central dust extraction. Optionally, a version with a direct filter mounting BELFI with on-site material can be adapted.

Continuous loading process:

The implemented vacuum valve ensures an unwanted contraction of BIG-BAG and / or bellow.

Weighing unit:

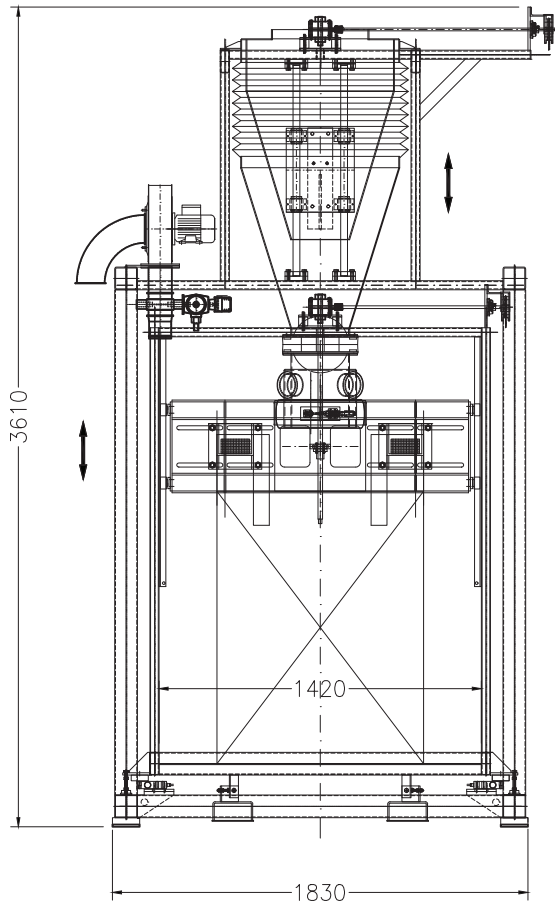
The weighing table is completely decoupled from the previous inflatable sleeve and butterfly valve and therefore a maximum weighing accuracy can be achieved.

Reliability / quality:

STANELLE quality - ruggedized by perfect-engineered durable components.

Option / modifications:

Our own construction department is able to do individual adaptations / changes any time.



Technical Data

Frame:	from profile tube 100mm x 100mm with forklift runners
Filling connection:	designed for JET-LOADER type QUADRO
Vent pipe:	DN 100 with blind cover
Vacuum valve:	for ventilating the BIG-BAG station
Bellows:	to compensate for the height adjustment
Suspension:	adjustable for BIG-BAG in height
Connection device:	for BIG-BAG with bulking and counter-cuff
BIG-BAG height adjustment:	using manual rack winch
Neck size inflatable sleeve:	Ø 350 mm / Ø 420 mm
Butterfly valve:	NW 250 electro pneumatically operated
Weighing table:	suitable for pallets 1200 mm x 1200 mm

BIG-BAG

BIG-BAG size:	w x d maximum 990 mm x 990 mm
BIG-BAG height:	without loops 1500 mm / optional 2000 mm
BIG-BAG contents:	maximum 2000 kg
BIG-BAG loop length:	please announce
Filling hose length:	minimum 350 mm
Filling hose diameter:	350 mm
Transport:	with pallet and forklift

Option 1

Level indicator not needed in case option 2 is selected

Option 2

Measuring cells: 4 x 1000 kg
 Weighing terminal: power supply 230VAC
 4 digital inputs and outputs
 RS-485 Interface
 Temperature range -20°C up to +50°C

Option 3

Air blower: Needed for perfect filling of inliner BIG-BAG's
 power supply air blower 400V / 16A

Option 4

Control unit: Standard control unit for inflatable sleeve, weighing terminal, air blower and potential free contacts