



CONNEX[®]-couplings

Stanelle - always the best solution

For the economic connection
and sealing of conveyor lines

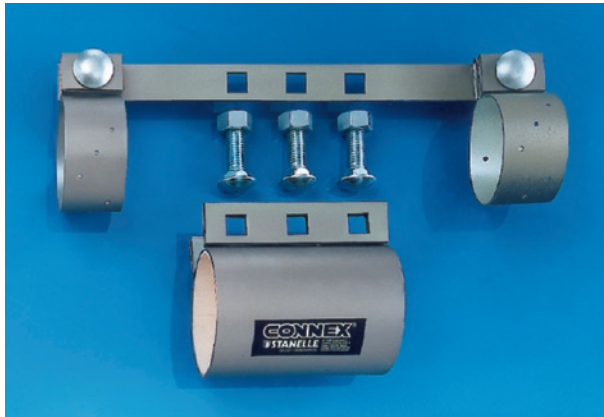


Areas of application: The Stanelle CONNEX pipe coupling system is designed for the safe, ecological, and cost saving connection and sealing of pneumatic conveyor lines.

Pneumatic conveyor pipelines are subjected to heavy loading and therefore high abrasion. Conventional flange connections often cause turbulence in the bulk flow and therefore abrasion. The CONNEX pipe coupling centres the pipelines precisely and free of turbulence and at the same time provides a tight dust seal. An inset stainless

steel strip safeguards potential equalisation against electrostatic build-up.

Functionality: The conveyor lines for sealing are centred precisely and tack welded, and the tack welds ground down. The toothed gasket of the CONNEX coupling is placed around the pipe, and the screws in the outer housing engaged for a pressure tight seal. The toothed rubber gasket is available in various qualities and designs for assured permanent and dust tight connections.



arm for high tensile forces

Material and design:

outer and inner skin of galvanised steel
natural rubber/NBR gasket
temperature range -30 °C to +110 °C
grounding structure of stainless steel
other sizes, gaskets, and designs on request

Advantages:

- dust tight connection
- precisely centred pipeline joint
- abrasion reducing connection
- easy to install
- no flange gaskets and no complex welding work

Dimensions and technical data:

Outer pipe diameter (mm)	CONNEX coupling length (mm)	Number of screws
38,1	100	2
38,1	150	3
48,3	100	2
48,3	150	3
50,0	100	3
54,0	100	2
54,0	150	3
60,3	150	3
70,0	150	3
76,1	150	3
82,5	150	3

Outer pipe diameter (mm)	CONNEX coupling length (mm)	Number of screws
88,9	150	3
88,9	200	4
95,0	150	3
95,0	200	4
101,6	150	3
101,6	200	4
108,0	150	3
108,0	200	4
114,3	150	3
114,3	200	4
127,0	150	3

Outer pipe diameter (mm)	CONNEX coupling length (mm)	Number of screws
133,0	150	3
133,0	200	4
139,7	150	3
152,4	150	3
159,0	150	3
168,3	150	3
168,3	200	4
193,7	150	3
203,0	150	3
219,1	200	4
254,0	150	3

Further components:

