

## Mobile Big-Bag – filling station VARIO BB-S



**Mobile:**

The filling station can be easily moved with a forklift on-site.

**Multiple use of RONDO/QUADRO:**

The existing STANELLE jet loaders RONDO/QUADRO normally for open and closed truck loading can also be used for Big Bag loading. An adaptation to existing loading systems is also available as an option.

**Flexible:**

Perfect height adjustment due to two trapezoidal screws enable:

- a) the filling of Big Bags with filling heights up 1.550 mm / optional 2.000 mm
- b) the adaptation to different filling hose lengths depending on the Big Bag manufacturer

Big Bags up to 1400 x 1360 mm ground size fit into our VARIO BB-S.

**Environmentally friendly:**

The filling-dome has an aspiration outlet to connect to a central dust extraction. Optionally, a version with a direct filter mounting BELFI with on-site material can be adapted.

**Continuous loading process:**

The implemented vacuum valve ensures an unwanted contraction of Big Bag and / or bellow.

**Weighing unit:**

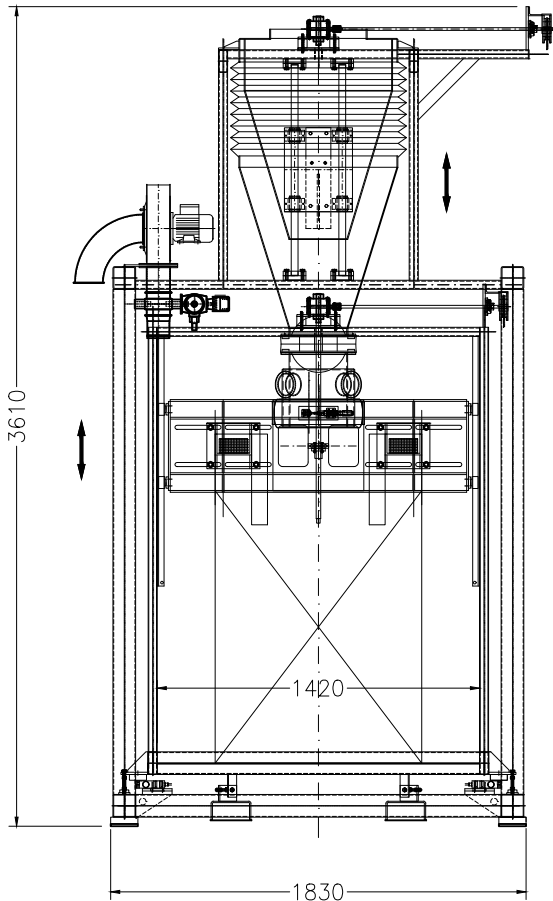
The weighing table is completely decoupled from the previous inflatable sleeve and butterfly valve and therefore a maximum weighing accuracy can be achieved.

**Reliability / quality:**

STANELLE quality - ruggedized by perfect-engineered durable components.

**Option / modifications:**

Our own construction department is able to do individual adaptations / changes any time.



### Technical Data

Frame:	from profile tube 100mm x 100mm with forklift runners
Filling connection:	designed for JET-LOADER type QUADRO
Vent pipe:	DN 100 with blind cover
Vacuum valve:	for ventilating the Big Bag station to compensate for the height adjustment
Bellows:	
Suspension:	adjustable for Big Bag in height
Connection device:	for Big Bag with bulking and counter-cuff
Big Bag height adjustment:	using manual rack winch
Neck size inflatable sleeve:	Ø 350 mm / Ø 420 mm
Butterfly valve:	NW 250 electro pneumatically operated
Weighing table:	suitable for pallets 1200 mm x 1200 mm

### Big Bag

Big Bag-size:	w x d maximum 990 mm x 990 mm
Big Bag height:	without loops 1500 mm / optional 2000 mm
Big Bag contents:	maximum 2000 kg
Big Bag loop length:	please announce
Filling hose length:	minimum 350 mm
Filling hose diameter:	350 mm
Transport:	with pallet and forklift

#### Option 1

Level indicator not needed in case option 2 is selected

#### Option 2

Measuring cells: 4 x 1000 kg  
 Weighing terminal: power supply 230VAC  
 4 digital inputs and outputs  
 RS-485 Interface  
 Temperature range -20°C up to +50°C

#### Option 3

Air blower: Needed for perfect filling of inliner Big Bags  
 power supply air blower 400V / 16A

#### Option 4

Control unit: Standard control unit for inflatable sleeve, weighing terminal, air blower and potential free contacts